

**IN THE COMMISSIONERS COURT
OF
TOM GREEN COUNTY, TEXAS**

**ORDER CONFORMING ELECTION PRECINCTS
TO REVISED COMMISSIONERS COURT PRECINCTS**

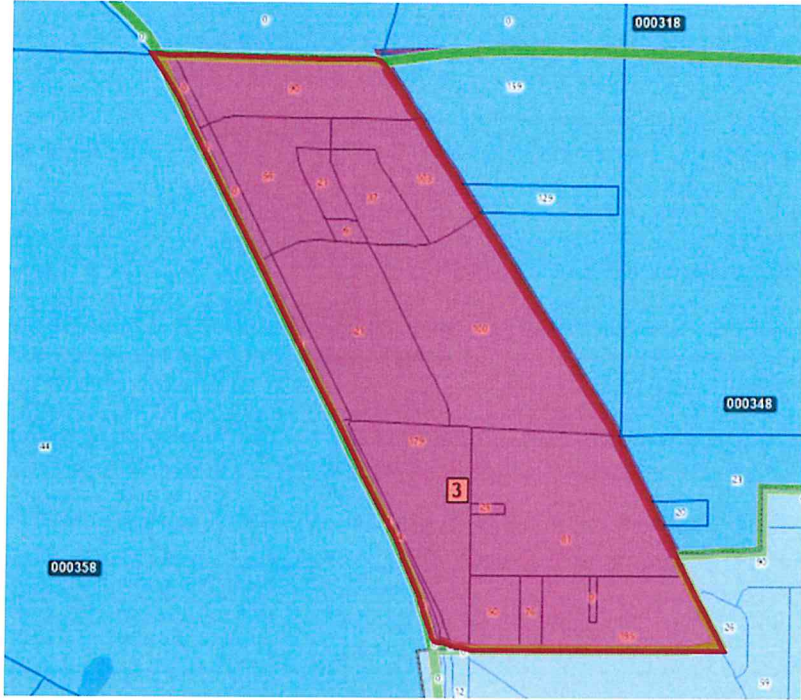
BE IT REMEMBERED, that on the 14th day of December, 2021, the Commissioners Court of Tom Green County, Texas, adopted revised boundaries for its Commissioners Court precincts, pursuant to Article V, Section 18 of the Texas Constitution, §81.021 of the Texas Local Government Code, and Chapter 42 of the Texas Election Code.

Pursuant to the provisions of Chapter 42, Texas Election Code, the Commissioners Court hereby approves the realignment of County Election Precincts to conform to the newly revised and adopted boundaries of the four Commissioners Court Precincts:

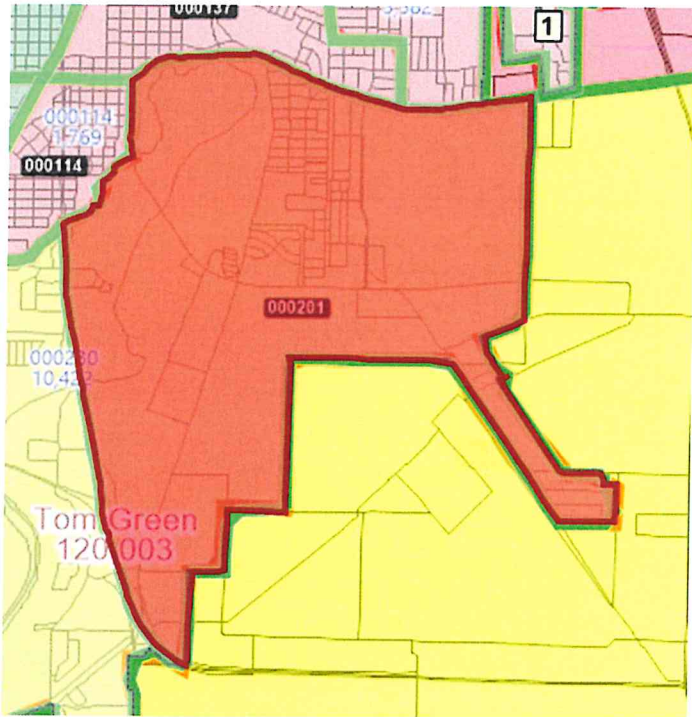
1. Voting Precinct 358, is hereby revised to exclude territory north of N US Highway 87, and to create a new voting precinct 318 for that excluded territory, bounded on the north by the County line, on the east by State Highway 208 to a point of intersection with the north line of Voting Precinct 348, as depicted by the attached map.



2. Voting Precinct 348, is hereby revised to include territory previously contained in Voting Precinct 358, as follows: That territory east of N US Highway 87 at a point of intersection with Grape Creek Road, continuing south to a point of intersection with Cauley Lane, continuing west to N US Highway 87, as depicted by the attached map.



3. Voting Precinct 230, is hereby revised to exclude the territory East of S Bryant Blvd/S US Highway 87 and to create a new voting precinct 201 for that excluded territory, bounded on the West by S Bryant Blvd/S US Highway 87, on the North by Paint Rock Rd, on the East and South by the previous Precinct 230 boundary as depicted in the map below.



To the extent that any of the foregoing revised election precincts contain territory inside a city with unincorporated territory outside of the affected city, the Commissioners Court, pursuant to §42.007 (1) and (2), finds that either of the two areas (within and without the incorporated city) cannot constitute a separate election precinct of suitable size or shape that contains the permissible number of voters, or cannot be combined with other territory on the same side of the city boundary to form an election precinct of a suitable size or shape that contains the permissible number of voters without causing another election precinct to fail to meet those requirements. The Commissioners Court delegates sufficient discretion to the Office of Elections Administration to make such boundary adjustment to said election precincts to facilitate the effective administration of elections, and to pose the least inconvenience to the voters of the affected election precincts.

The above and foregoing changes to Election Precincts shall take effect January 1, 2022, and will remain in effect until changes by further Order of this Commissioners Court.

Date: *December 14, 2021.*

Stacy H. G.

County Judge

Ralph Hoelscher

Commissioner, Precinct 1

Sam Farn

Commissioner, Precinct 2

Ruth Ben

Commissioner, Precinct 3

Luis Lopez

Commissioner, Precinct 4

Christina Wanda

County Clerk

